

# Downloading Fonts

---

<b>Downloading</b>	2
<b>Font downloader</b>	2
<b>Printer Menu</b>	3
Exiting the Application	3
<b>Font Menu</b>	3
The Wizard	4
Selecting a Font	4
Downloading a Font	8
Delete a font	9
Font Information	9
<b>Icon bar Menu</b>	9
<b>Help Menu</b>	9
Help	9
About...	10
<b>Shortcuts Keys</b>	10

## Appendix

---

### Downloading

The download module allows you to download True type fonts, provided they have been installed and are available under Windows.

Only printers able to receive downloaded fonts can be selected from the font downloader.

**Font downloading** is executed simply and rapidly thanks to an integrated tool in the labeling software.

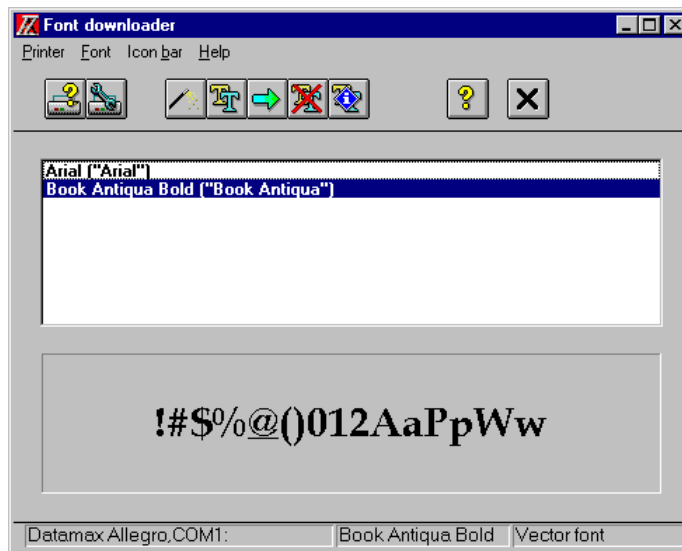
- To access the user interface, select the download command of the **Tools** menu.
- You can also start up the application from the Start menu of **Windows<sup>™</sup>**.

### Font downloader



The **Font downloader** main window includes a Icon bar , a zone where the loaded fonts or the fonts to load are listed, a preview zone and a status bar.

The status bar indicates the printer model selected, the communication port and the nature of the communication (Direct access or not).


## Font downloader



### Printer Menu

- To access the printer selection box, select the **Select** command from the **Printer** menu, or click the  button (see Chapter 21).
- To access the printer setting box, select the **Settings** command from the **Printer** menu or click the  button.

### Exiting the Application

- To exit the application, select the **Exit** command from the **Printer** menu or click the  button.

### Font Menu

With these buttons, you will be able to choose the font to download, to delete fonts, to access information about a particular font and to download the required font.




## Appendix

---



### The Wizard

The **Wizard** helps you specify the font to be downloaded by walking you through the process step by step.


- To access the **Wizard** dialog box, select the **Wizard** command from the **Font** menu or click the  button.

↳ The **Wizard** dialog box appears on the screen.

Default values and comments are supplied for each step.

  Use the preceding two buttons to move backward or forward from the current **Wizard** step.

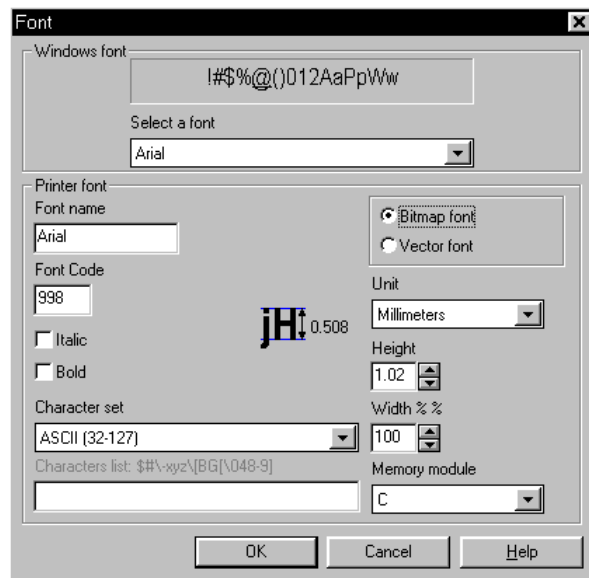
### Selecting a Font

- To access the **Font** dialog box, select the **Select** command from the **Font** menu or click the  button.

↳ The **Font** dialog box appears.

Depending on the printer selected, some options will not be available.

## Font downloader



This dialog box is divided into two zones :

- ◆ The **Windows Font Area**, where you can select the **Windows™** True Type font that you will use to create the font to be downloaded;
- ◆ The **Printer Font Area**, where you set the various parameters of the font to be loaded into the printer.

### Windows Font

- Select the font of your choice from the scrolling menu.

Fonts can only be downloaded if they have been installed in **Windows™**.

## Appendix

---

### Printer Font

**Font name:** This field lets you enter one character to identify the downloaded bitmap font. This name will appear in **Printer font list** of the **Text** dialog box (see text object — Chapter 6).

**Font code:** Generated by the downloader, this code allows you to select the font out of the printer. It is advisable to not modify it.

**Italic/Bold:** Check these two boxes to indicate the font style.

**Bitmap Font:** Select this option if you want to create a bitmap font. The bitmap fonts occupy less space in memory.

**Vector Font:** Select this option if you want to create a vector font. The outline of the letter is recalculated and the letter comes out perfectly smooth.

**Unit:** Select the unit required among those suggested in the scroll list:

- ◆ Millimeters,
- ◆ inches (2.54 mm),
- ◆ points (1/72ème of inch),



On the right of this icon, the ascent size of the character appears as it will be after the printing (the unit is the one selected in the unit field).

**Height:** This field allows you to set the height of the font.

**Width:** The width of characters is expressed in percentages:

- ◆ the 100 %, percent value, which is the default value, is the most natural-looking one;
- ◆ a 50% value will decrease the default value by one half.,
- ◆ a 200% value will double the default value.

**Memory Module:** Select the memory module in which the font to be downloaded will be stored from this scrolling list. The list's content depends on the printer used.

## Font downloader

---

**Character set:** This scrolling list allows you to define the characters to be downloaded into the printer:

- ♦ **ASCII (32-127):** If you choose this option, the characters from 32 to 127 of the ASCII table will be loaded
- ♦ **Numeric:** With this option, only the numbers are loaded into the printer.
- ♦ **Alphanumeric Upper case:** With this option, only the numbers and capital letters are loaded into the printer.
- ♦ **Alphanumeric Upper/Lower case:** With this option, only the numbers, capital and small letters are loaded into the printer.
- ♦ **ASCII (32-255):** If you choose this option, the characters from 32 to 255 of the ASCII table will be loaded.
- ♦ **User defined:** If you select the User defined option, you will have to enter the characters required in the characters field list.

**Characters List:** This field offers you the possibility of defining each character or group of characters that you want to include in the font to download.

You can enter all the characters available in the ASCII table, however some control characters require the use of the « \ » character (see the following example).

## Appendix

---

### List of control characters:

- ◆ "-" used between two limit values, it indicates that all the values included between these two limits are selected.
  - ◆ "[" introduces a character sequence.
  - ◆ "]" closes a character sequence.
  - ◆ "\" used to introduce an ASCII code.
- To introduce one of the control characters as a normal character, enter « \ » character followed by the control character.


### Example:

Characters to insert	Syntax
'\', '#', ',', '-', '[', ']', numbers from 4 to 9	\\# \\-151\\[[4-9]
'\$', '#', '-', 'x', 'y', 'z', '[', 'B', 'G', numbers from 0 to 9	\$#\\-xyz\\[BG[048-9]

**Note:** the groups of characters must always be in ascending order.

Once a font is selected, its name and characteristics are displayed in the preview zone of the main window.

## Downloading a Font

- To download one or more fonts selected from the main window, select the **Download** command from the **Font** menu or click the  button.

The download box, which indicates the progress of the download under way, appears on the screen. It is possible to cancel the download by clicking the **Cancel** button.

The font will be downloaded into the port indicated on the status bar.


### Delete a font

- Select a font in the main window list and click on the **Delete** button shown below:



The font(s) is(are) simultaneously deleted from the printer memory and the Printer fonts list of the Text dialog box (see the **Text object** — **Chapter 6**).

### Font Information


- To access the information available about the font you selected in the main window, select the **Information** command from the **Font** menu or click the  button.
- You can also obtain this information by double-clicking the font you selected.

### Icon bar Menu

The **Icon bar** command in this menu can be set to display or hide the Icon bar command.

### Help Menu

#### Help

- To access the application's on-line help function, select the **Help** command or click the  button.

## Appendix

---

### About...

- To access a page of information about the program, select the **About...** command.

## Shortcuts Keys

The software is essentially mouse driven, but some functions can be called more quickly by pressing a key combination. Here is the list:

Keys	Functions
F1	Help
F4	Printer selection
F5	Printer settings
F6	Downloading
F7	Font selection
Alt + F4	Exit the software