



Quick Start Guide



Safety First



Caution

Government regulatory agencies require that this access point only use approved antennas. Therefore, this access point uses a custom antenna connector. Do not use antennas not approved for use with this access point.



Caution

The WA21G with the internal power supply option may be connected either to a standard Ethernet port or to a powered Ethernet host that complies with the IEEE 802.3af specification for power over Ethernet.



Caution

When the WA21G is connected to a powered Ethernet host, both the AC power cord and the Ethernet cables must be disconnected prior to servicing.

Intermec
 6001 36th Avenue West
 Everett, Washington 98203
 U.S.A.
tel 425.348.2600
fax 425.355.9551
 www.intermec.com
 © 2005 Intermec Technologies Corporation. All rights reserved.



P/N 930-079-001 Rev A
 MobileLAN access WA21G Quick Start Guide

For complete instructions on how to install, operate, configure, maintain, and troubleshoot the WA21G, see the *MobileLAN access WA2XG System Manual* (P/N 074921). This manual is available as a PDF file on the Documentation for AIT-III CD (P/N 074080). To order accessories, printed documentation, or CDs, contact your Intermec representative.

Where to Go From Here

About the WA21G

Intermec's MobileLAN™ access WA21G is the ideal enterprise-class access point for industrial applications in harsh environments where cold temperatures, small airborne particles, and moisture are prevalent. It provides the features necessary to support mission critical applications.

Wi-Fi CERTIFIED b/g The WA21G with an IEEE 802.11g radio installed is Wi-Fi certified for interoperability with other 802.11g and 802.11b wireless LAN devices.

The WA21G also has these features:

- Integrated power-over-Ethernet solution eliminates the need and expense of installing separate cables and outlets for power and for Ethernet.
- Fiber optic solution enables wireless service on 100 Mbps networks.
- Advanced authorization, authentication, and encryption capabilities including WPA (PSK and 802.1x) security, 802.1x security, and basic WEP 64/128 security.

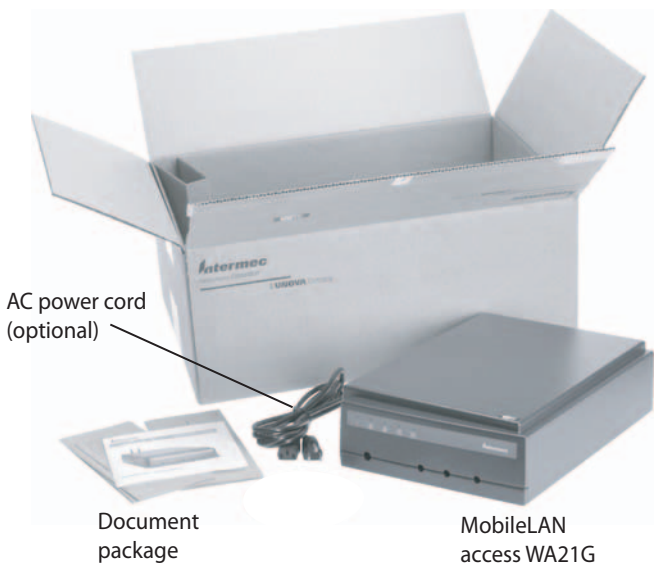
This quick start guide helps you to understand the WA21G ports and LEDs. You can also use this quick start guide to get an overview of how to install the WA21G, how to connect the WA21G to power and to your network, and how to use the MobileLAN access Utility to configure its IPv4 address. Once you assign the WA21G an IP address, you can continue configuring it using a web browser interface.

Specifications

Physical dimensions	9.5 cm x 23.6 cm x 35.5 cm (3.75 in x 9.3 in x 14.0 in)
AC electrical rating	Standard ~100 to 240 V, 1.0 to 0.5A, 50 to 60 Hz Heater (optional) ~100 to 120 V, 1.0A, 50 to 60 Hz or ~200 to 240 V, 0.5A, 50 to 60 Hz
Power over Ethernet	electrical rating == 48V, 315 mA
Environmental rating	IP54
Operating temperature	Standard -25°C to 70°C (-13°F to 158°F) Heater (optional), AC only -30°C to 70°C (-22°F to 158°F) Heater/insulated bag (optional), AC only -30°C to 0°C (-22°F to 32°F)
Storage temperature	-40°C to 70°C (-40°F to 158°F)
Humidity	10 to 90%, non-condensing

Patent information
 Product is covered by one or more of the following patents: 4,910,794; 5,070,536; 5,295,154; 5,349,678; 5,394,436; 5,425,051; 5,428,636; 5,483,676; 5,504,746; 5,546,397; 5,574,979; 5,592,512; 5,680,633; 5,682,299; 5,696,903; 5,740,366; 5,790,536; 5,844,893; 5,862,171; 5,940,771; 5,960,344. There may be other U.S. and foreign patents pending.

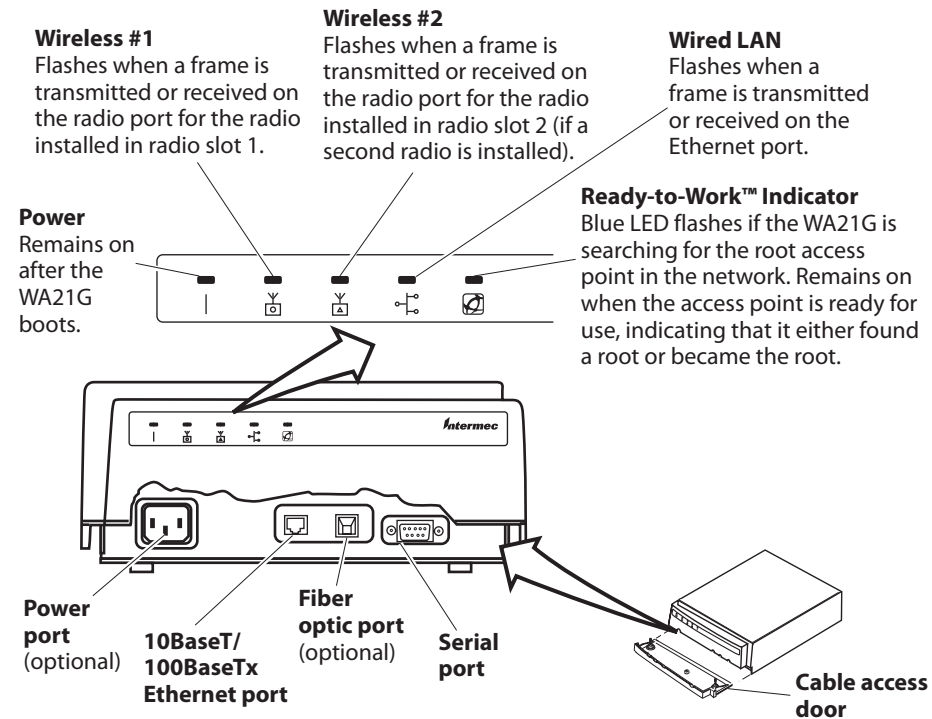
Out of the Box



Note: The WA21G does not ship with antennas. For a list of antennas and antenna accessories, see the *MobileLAN access WA2XG System Manual* or contact your Intermec representative.

1 Defining the LEDs and Ports

To access the WA21G ports, unscrew the two thumbscrews that are on the front of the cable access door and then remove the door.

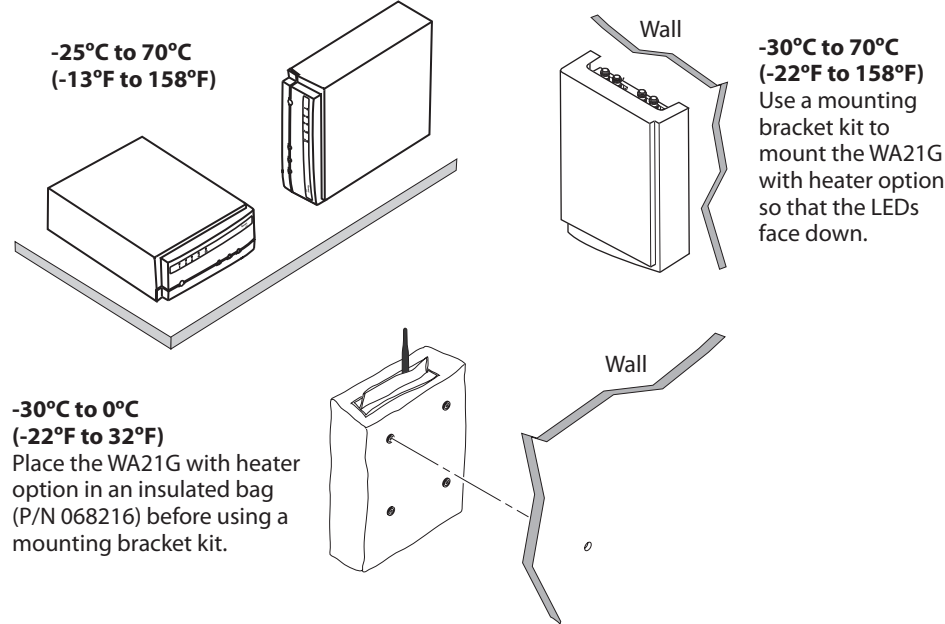


2 Mounting the WA21G

You can place the WA21G either horizontally or vertically on a stable surface. You can also mount the WA21G to a wall or a beam using one of these mounting bracket kits:

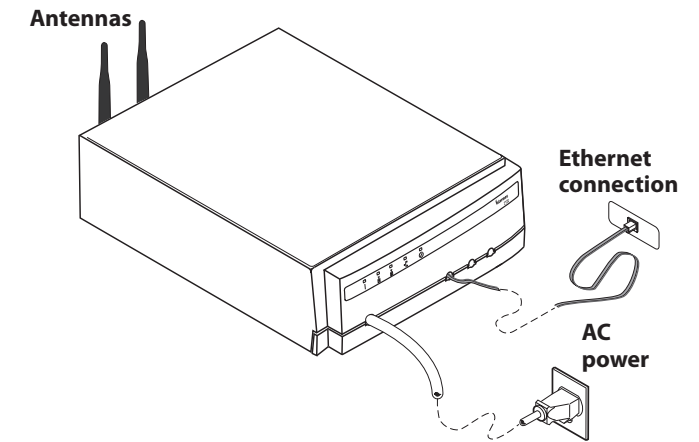
- Mounting bracket kit (P/N 068918)
- Rotating mounting bracket kit (P/N 068751)

Depending on your operating temperature needs and power, you can use these options:



3 Connecting to Power

- 1 Attach antennas to the WA21G. Intermec offers a variety of antennas and antenna accessories. For a complete list, see the *MobileLAN access WA2XG System Manual*.
- 2 Connect the WA21G to power. You can either use an AC power cord or the power over Ethernet option. To use power over Ethernet, you use an Ethernet cable to connect the Ethernet port to a MobileLAN power bridge, a Cisco power bridge, or another 802.3af-compliant power bridge. For help, see the documentation that shipped with your power bridge.

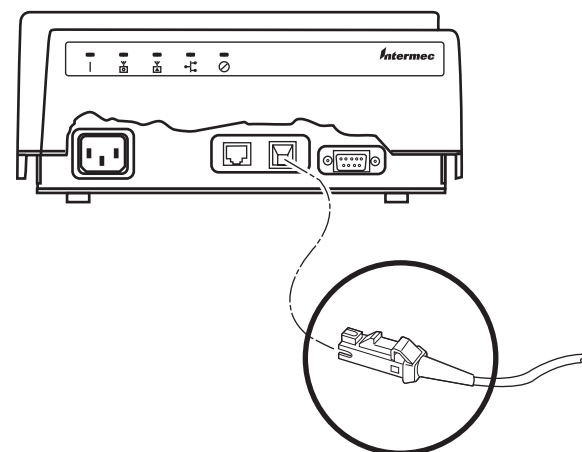


4 Connecting to Your Network

Connect the WA21G to your network. Use an Ethernet cable to connect the Ethernet port to an Ethernet drop.

Or, you can connect the WA21G fiber optic port to your fiber optic network. The fiber optic port has a male MT-RJ connector interface. Therefore, you must supply a patch cord with a female MT-RJ connector to insert into this port.

You must also supply a patch cord and an adapter, depending on the type of network to which the WA21G is connected: MT-RJ, square connector (SC), or straight tip (ST). Patch cords and adapters are available from many different manufacturers. For more help connecting to a fiber optic network, see the *MobileLAN access WA2XG System Manual*.



Insert a **female** MT-RJ connector into the fiber optic port

5 Setting an Initial IP Address

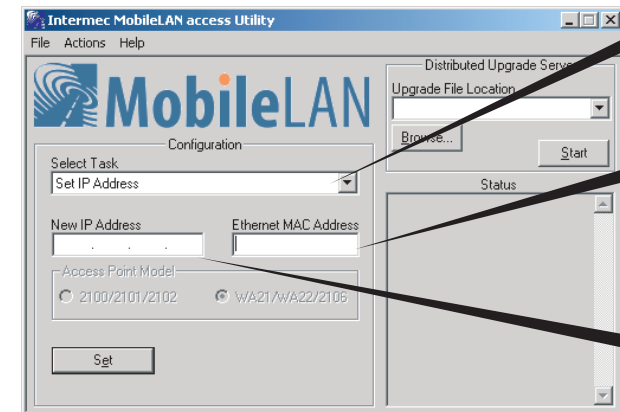
Note: If you are using IPv6 addressing, you must use a communications program, such as HyperTerminal, to assign the WA21G an initial IP address. For help, see the *MobileLAN access WA2XG System Manual*.

To set an initial IPv4 address

- 1 Install the MobileLAN access Utility on your PC. Download the utility from the Intermec web site (www.intermec.com), extract the .ZIP file, double-click the .EXE file, and then follow the instructions that appear on your screen.

Note: Your PC must be on the same Ethernet segment as the access point. Or, if your PC is communicating wirelessly with the access point, you must have an active radio connection.

- 2 Start the utility.
- 3 Configure parameters A through C. See the screen to the right.
- 4 Reboot the access point by disconnecting the Ethernet cable and reconnecting it.
- 5 Immediately click **Set**. The Status box lets you know when the new IP address is successfully set.



- A Click the down arrow and choose **Set IP Address**.
- B Enter the Ethernet MAC address of the access point (printed on the label on the access point).
- C Enter the new IPv4 address of the access point.

Congratulations!

Your wireless end devices can now begin transmitting data packets through the WA21G to your wired network. To continue configuring the access point, from the **Actions** menu choose **Configure Access Point**. Your web browser application (for example, Internet Explorer) starts and the Access Point Login screen appears.