



Intermec



**Installation
Instructions**

**EasyCoder PD4
Cutter**

Intermec Technologies Corporation
Corporate Headquarters
6001 36th Ave. W.
Everett, WA 98203
U.S.A.
www.intermec.com

The information contained herein is proprietary and is provided solely for the purpose of allowing customers to operate and service Intermec-manufactured equipment and is not to be released, reproduced, or used for any other purpose without written permission of Intermec.

Information and specifications contained in this document are subject to change without prior notice and do not represent a commitment on the part of Intermec Technologies Corporation.

© 2005 by Intermec Technologies Corporation. All rights reserved.

The word Intermec, the Intermec logo, and EasyCoder are either trademarks or registered trademarks of Intermec Technologies Corporation.

Throughout this manual, trademarked names may be used. Rather than put a trademark (™ or ®) symbol in every occurrence of a trademarked name, we state that we are using the names only in an editorial fashion, and to the benefit of the trademark owner, with no intention of infringement.

There are U.S. and foreign patents pending.

Contents

Before You Begin..... iv
Safety Summary..... iv
Global Services and Support v

1 Installation

Installing the Cutter 2

Before You Begin

This section provides you with safety information, technical support information, and sources for additional product information.

Safety Summary

Your safety is extremely important. Read and follow all warnings and cautions in this document before handling and operating Intermec equipment. You can be seriously injured, and equipment and data can be damaged if you do not follow the safety warnings and cautions.

Do not repair or adjust alone

Do not repair or adjust energized equipment alone under any circumstances. Someone capable of providing first aid must always be present for your safety.

First aid

Always obtain first aid or medical attention immediately after an injury. Never neglect an injury, no matter how slight it seems.

Resuscitation

Begin resuscitation immediately if someone is injured and stops breathing. Any delay could result in death. To work on or near high voltage, you should be familiar with approved industrial first aid methods.

Energized equipment

Never work on energized equipment unless authorized by a responsible authority. Energized electrical equipment is dangerous. Electrical shock from energized equipment can cause death. If you must perform authorized emergency work on energized equipment, be sure that you comply strictly with approved safety regulations.

Global Services and Support

Warranty Information

To understand the warranty for your Intermec product, visit the Intermec web site at <http://www.intermec.com> and click Service & Support. The Intermec Global Sales & Service page appears. From the Service & Support menu, move your pointer over Support, and then click Warranty.

Web Support

Visit the Intermec web site at <http://www.intermec.com> to download our current documents in PDF format. To order printed versions of the Intermec manuals, contact your local Intermec representative or distributor.

Visit the Intermec technical knowledge base (Knowledge Central) at <http://intermec.custhelp.com> to review technical information or to request technical support for your Intermec product.

Telephone Support

Contact your local Intermec representative. To search for your local representative, from the Intermec web site, click **Contact**.

Who Should Read This Document?

This Installation Instructions provides you with information about how to install the EasyCoder PD4 Cutter.

Related Documents

The Intermec web site at <http://www.intermec.com> contains our current documents that you can download in PDF format. To order printed versions of the Intermec manuals, contact your local Intermec representative or distributor.

Before You Begin

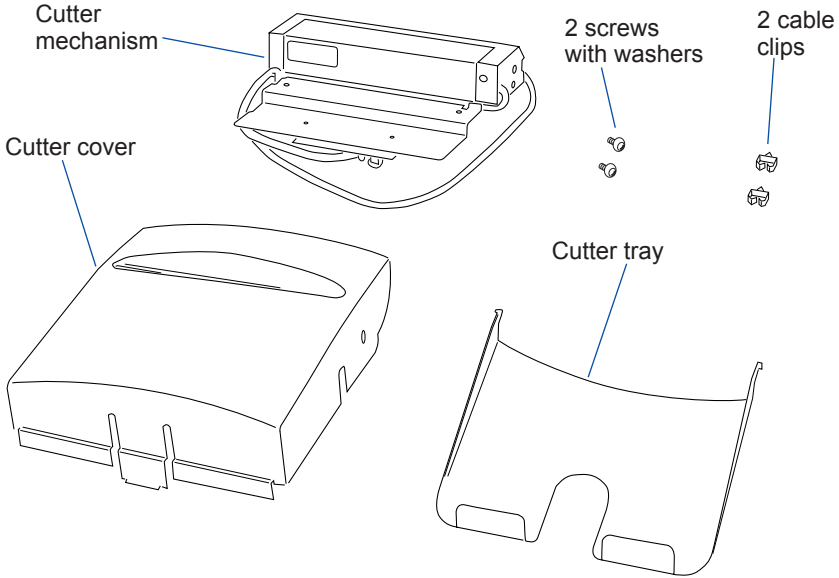


1 Installation

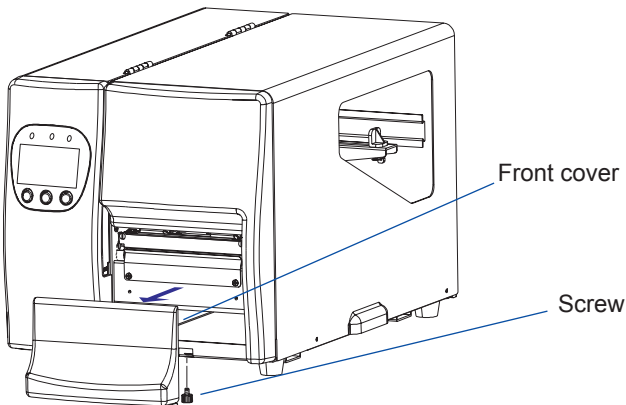
This chapter describes how to install the EasyCoder PD4 Cutter.

Installing the Cutter

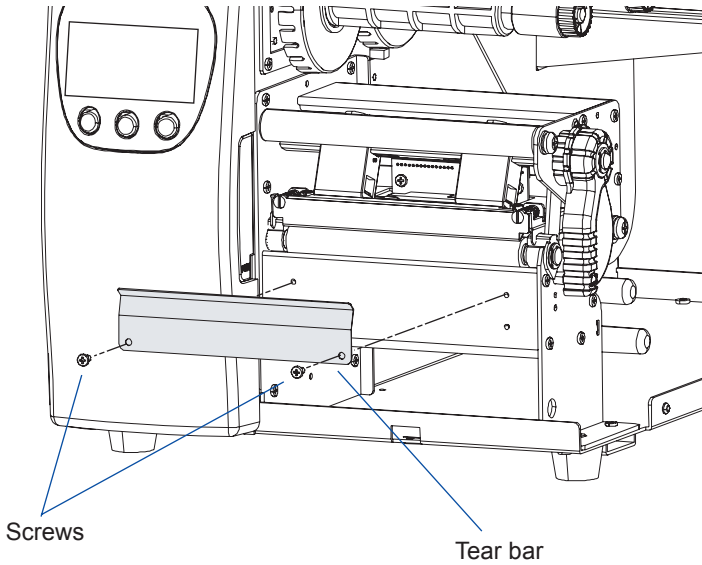
- 1 Unpack your EasyCoder PD4 cutter kit and check to see that all parts are included. If not, contact your sales representative.



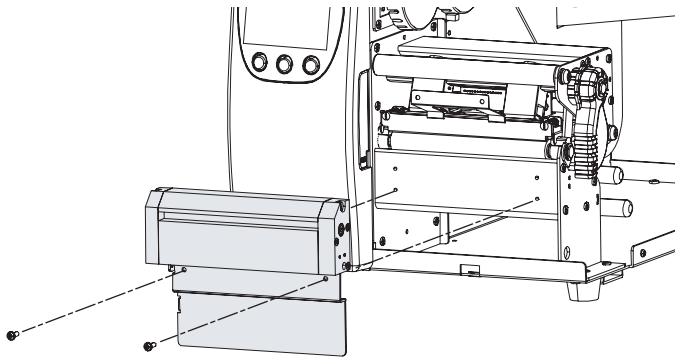
- 2 Make sure the printer is unplugged. Remove the screw that holds the front cover. Remove the front cover.



- 3 Open the side door and remove the tear bar, which is held by two Phillips screws.

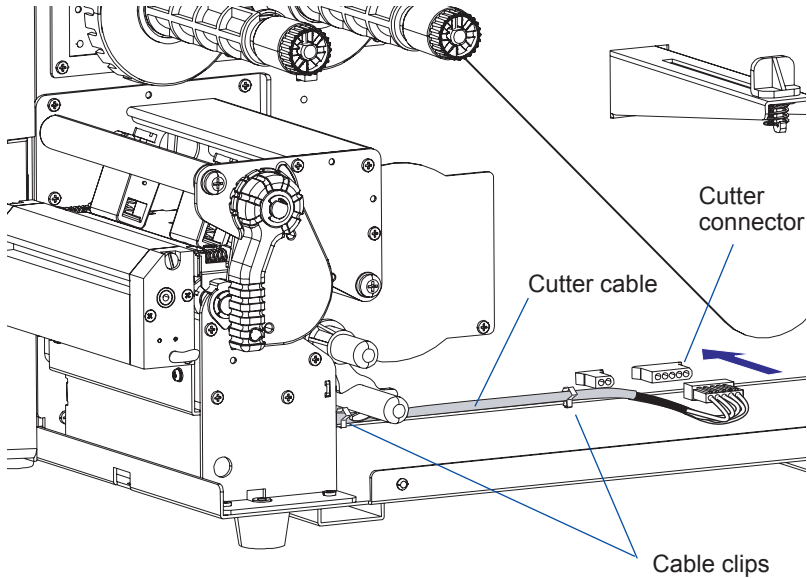


- 4 Attach the cutter mechanism to the printer using the two Phillips screws and washers included in the kit.

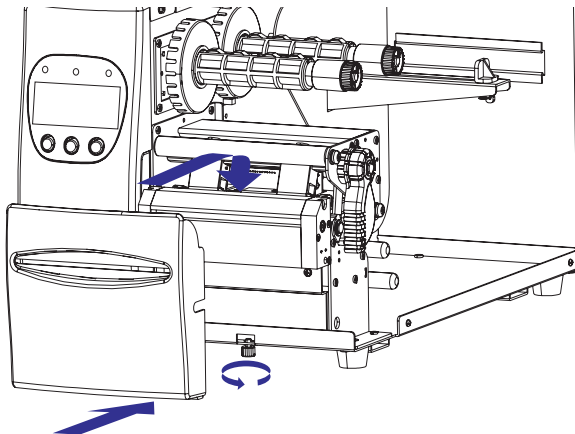


Chapter 1 — Installation

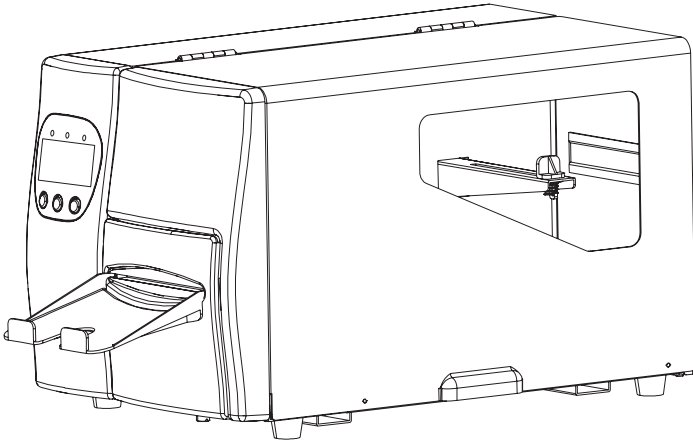
- 5 Plug in the cable from the cutter into the rear one of the two connectors in the center section and fasten the cable to the bottom plate using the two cable clips included in the kit.



- 6 Attach the cutter cover onto the cutter mechanism by first connecting the hooks on the back side of the cover over the cutter mechanism and then locking the cover with the screw at the bottom.



- 6 If needed, fit the tray to the front of the cutter.



- 7 Install the media as described in the Loading Media chapter, section “Tear-off (Straight-through)” of the *EasyCoder PD4 User's Guide*. Recommended label/paper length is at least 30 mm (1.18 in).



Note: Make sure that the printer is set to use the cutter, either in the Setup Mode (see Chapter 7) or using an **O** command, see *ESim v5.xx for EasyCoder PD4, Programmer's Reference Manual*. The label taken sensor cannot be used with the cutter.



Intermec Technologies Corporation

Corporate Headquarters
6001 36th Avenue West
Everett, WA 98203
U.S.A.

tel 425.348.2600

fax 425.355.9551

www.intermec.com

EasyCoder PD4 Cutter Installation Instructions



1-960646-00