



Intermec



Installation Instruc-
tions

MobileLAN™
access 2102
Mounting Kit for
EasyCoder Printers

Information in this manual is subject to change without prior notice and does not represent a commitment on the part of Intermec Printer AB.

© Copyright Intermec Printer AB, 2002. All rights reserved. Published in Sweden.

EasyCoder and EasyLAN are registered trademarks of Intermec Technologies Corp. The word Intermec, the Intermec logo, and MobileLAN are trademarks of Intermec Technologies Corp. Torx is a registered trademark of Camcar Division of Textron, Inc.

Description

Application of Use

The MobileLAN™access 2102 Mounting Kit is an optional device that makes it possible to fit and connect an Intermec MobileLAN™access 2102 device to any EasyCoder printer that is already fitted with an EasyLAN 10i or 100i interface board.



MobileLAN™access 2102

Installation Kit

The kit consists of

- one metal bracket for EasyLAN 10i-equipped printers (EasyCoder 3240, 3400, 3440, 3600, 4420, and 4440)
- one metal bracket for EasyLAN 100i-equipped printers (EasyCoder F2, F4, 501 XP, and 601 XP)
- one RJ-45 to RJ-45 communication cable
- two screws
- a Torx driver
- this installation instruction booklet

The MobileLAN™access 2102 mounting bracket (plastic) is packed with the MobileLAN™access 2102 device.

Manuals

For instructions on how to configure, connect, and use the MobileLAN™access 2102 device, refer to the MobileLAN™access 21XX System Manual (P/N 067150) published by Intermec in U.S.A.

Refer to the manuals that came with the EasyLAN 10i or 100i interface board for information on how to install and use the EasyLAN interface.

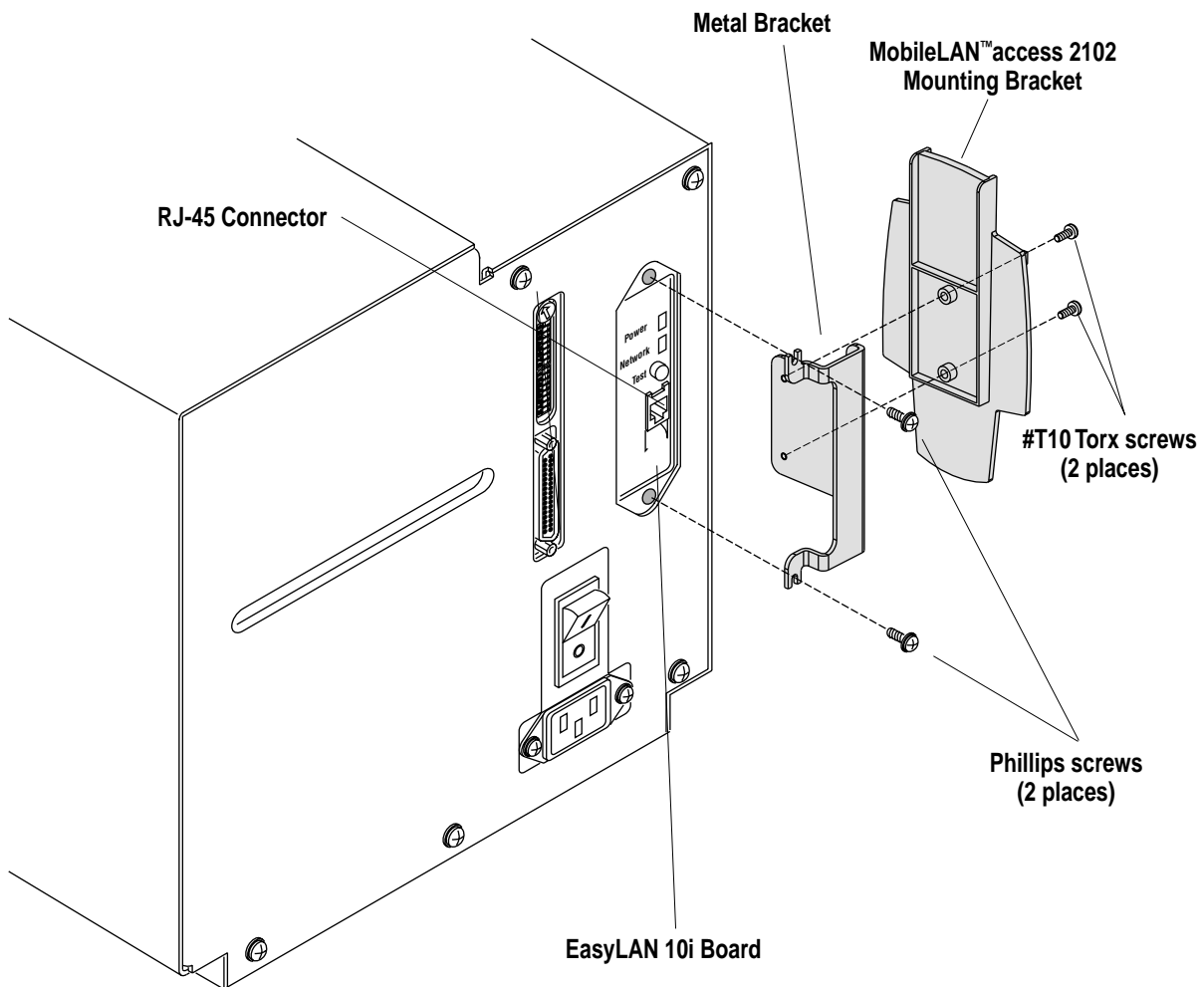
Installation

Fitting the Brackets

The illustration shows an EasyCoder 3400 printer. However, the same principles apply to EasyCoder 3240, 3440, 3600, 4420, and 4440.

EasyLAN 10i Interface Board

- Remove the two Phillips screws that hold the cover plate of the EasyLAN 10i interface board.
- Fit the correct type of metal bracket (see illustration) to the cover plate using the same screws.
- Using the two #T10 Torx screws included in the kit, attach the MobileLAN™ access 2102 mounting bracket (plastic) to the metal bracket.

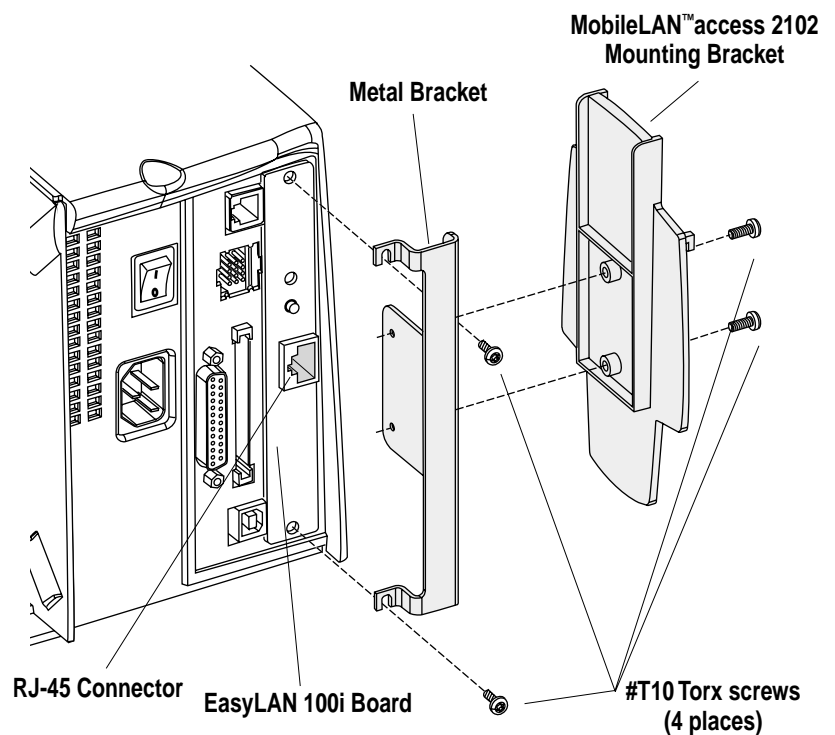


Fitting the Brackets, cont.

The illustrations shows an EasyCoder F-series printer. However, the same principles apply to EasyCoder XP-series printers.

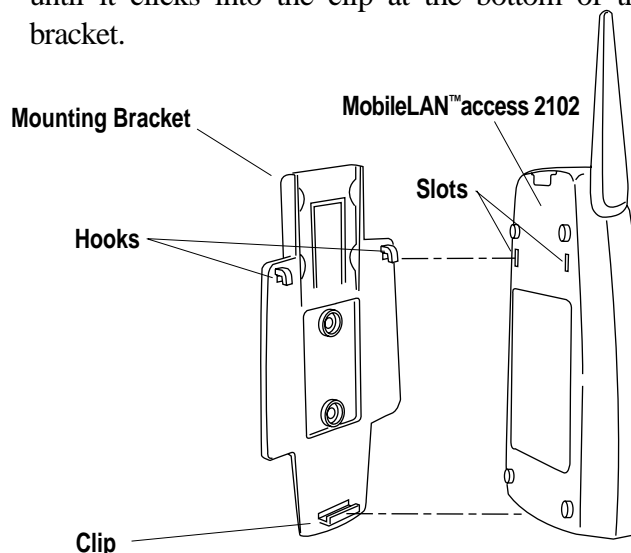
EasyLAN 100i Interface Board

- Remove the two #T10 Torx screws that hold the cover plate of the EasyLAN 100i interface board.
- Fit the correct type of metal bracket (see illustration) to the cover plate using the same screws.
- Using the two #T10 Torx screws included in the kit, attach the MobileLAN™ access 2102 mounting bracket (plastic) to the metal bracket.

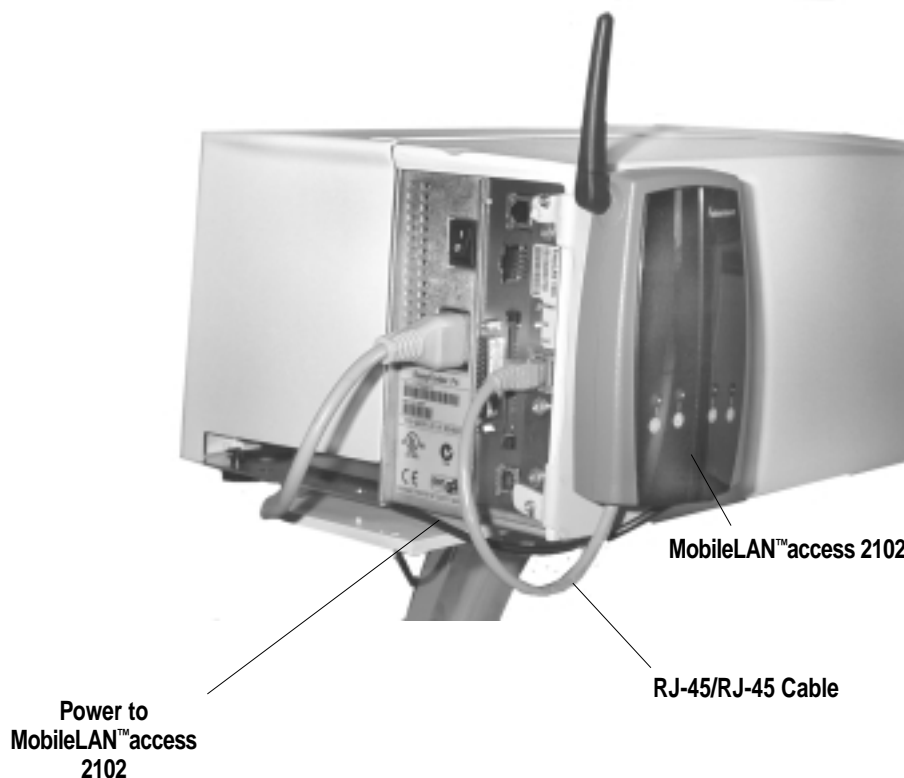


Fitting the MobileLAN™ access 2102

- Fit the slots on the back of the MobileLAN™ access 2102 device over the hooks on the mounting bracket. Slide the MobileLAN™ access 2102 up slightly and then press the base until it clicks into the clip at the bottom of the mounting bracket.



- Using the RJ-45/RJ-45 cable included in the kit, connect the MobileLAN™ access 2102 and the EasyLAN 10i or 100i interface board installed in the printer.
- Connect the MobileLAN™ access 2102 to power using the transformer/cable included in the kit.



Setting Up the Connection

General Description

The MobileLAN™access 2102 uses an IEEE 802.11B master/slave connection.

The master is a MobileLAN™access 21XX connected to an Ethernet network via a cable.

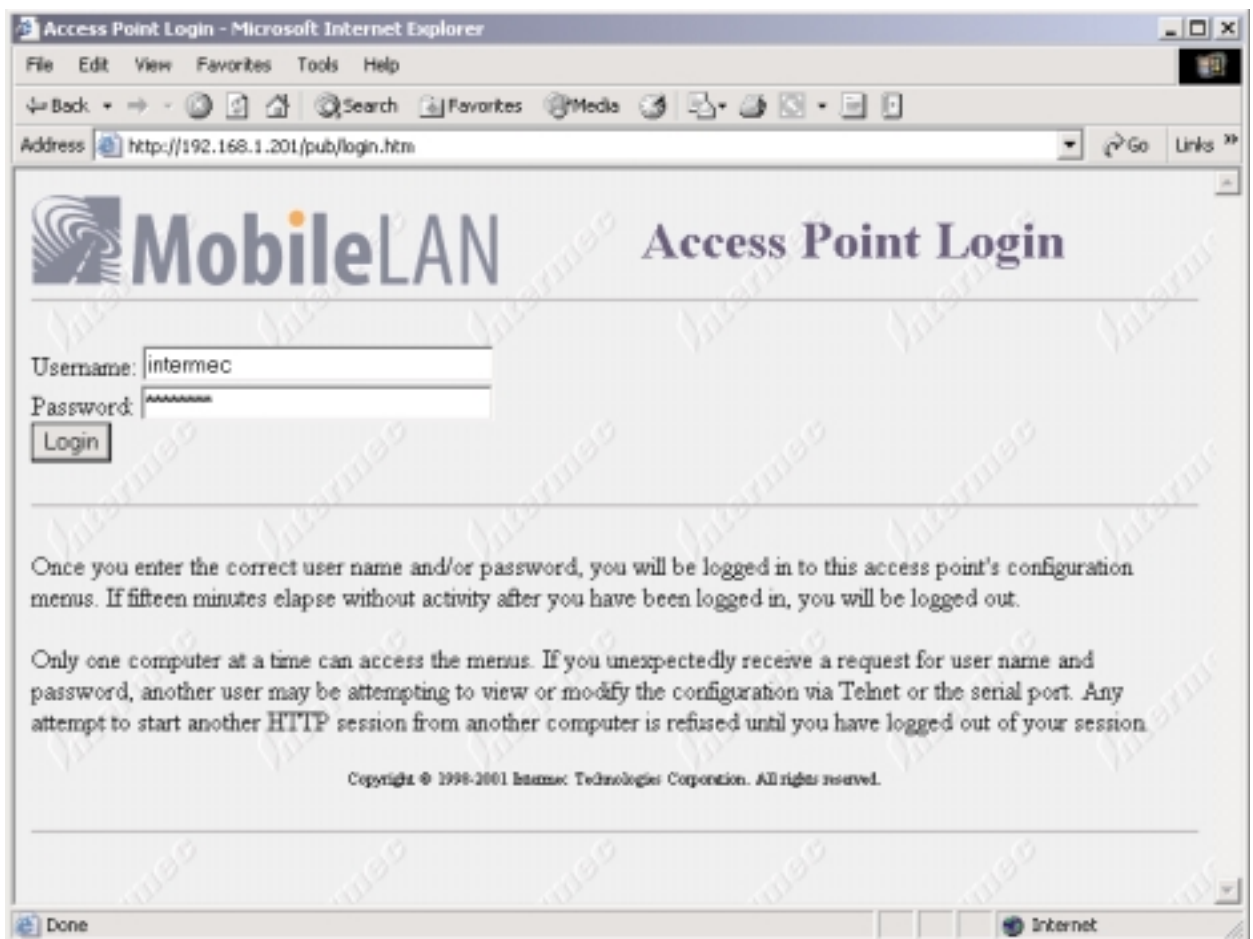
The slave is the MobileLAN™access 2102 fitted on the printer and connected to the printer's EasyLAN 10i or 100i interface board via a cable. The master and slave communicate via radio.

It is important that you start by setting up the Master and continue by setting up the Slave!

Set up the master first and then the slave using a Web browser as described below.

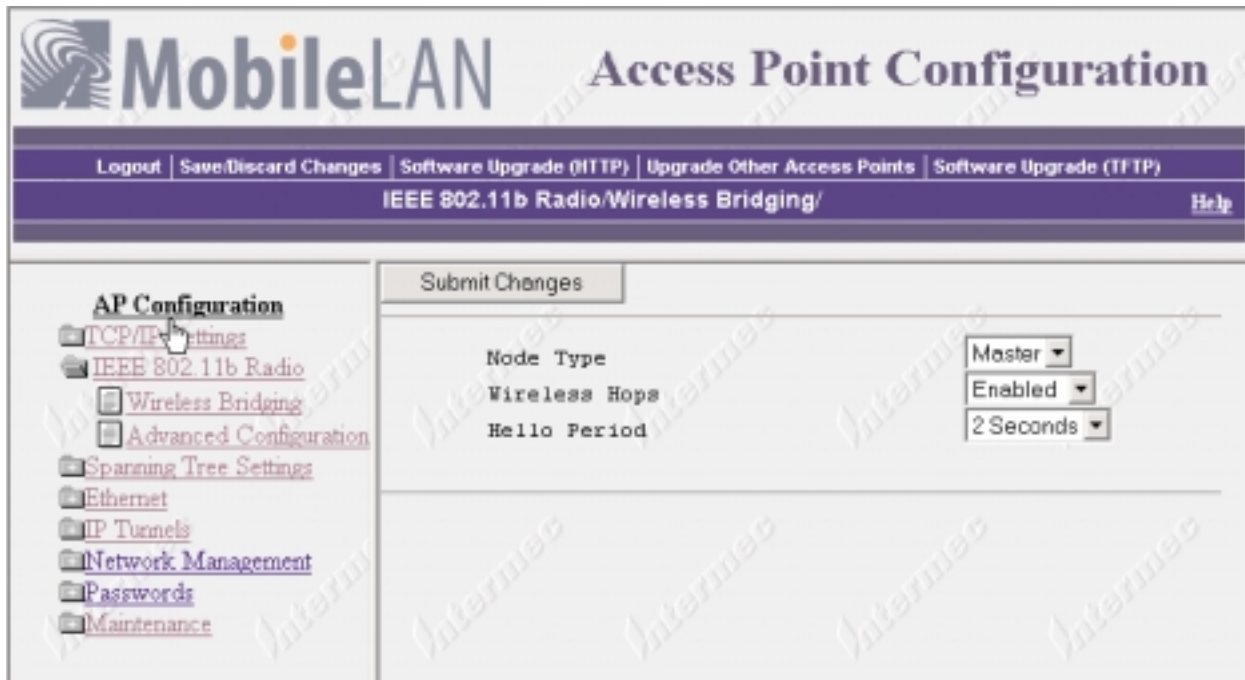
Master

Start a Web browser on a PC connected to a network:



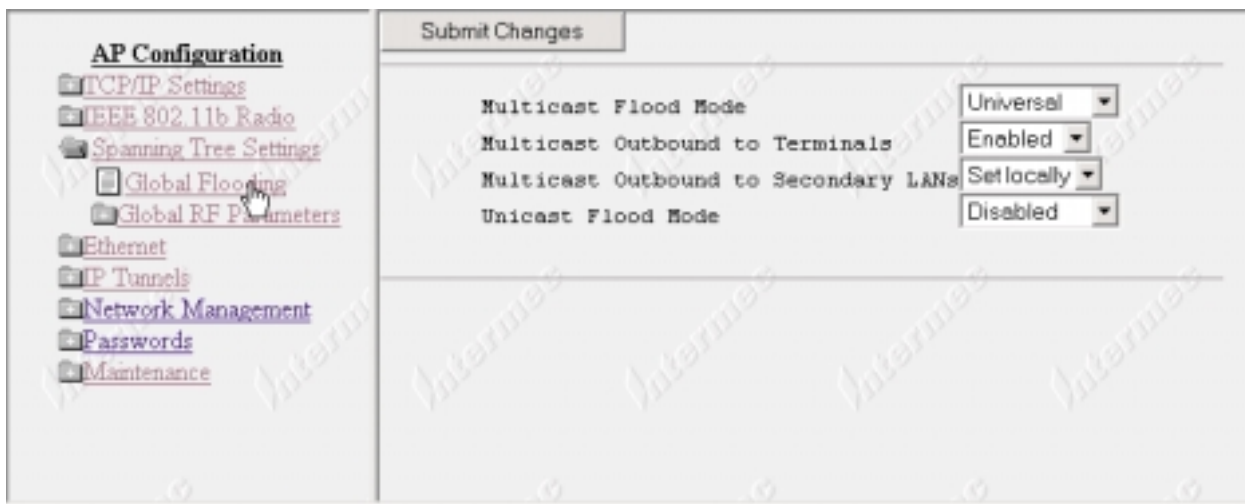
Log in as “**intermec**”. Default password is “**intermec**.”

Master, cont.



Set “Node” type to <Master>.
Set “Wireless Hops” to <Enabled>.

The “Spanning Tree Settings/Global Flooding” should now be as follows:



Master, cont.

Select the “Save/Discard Changes” option.

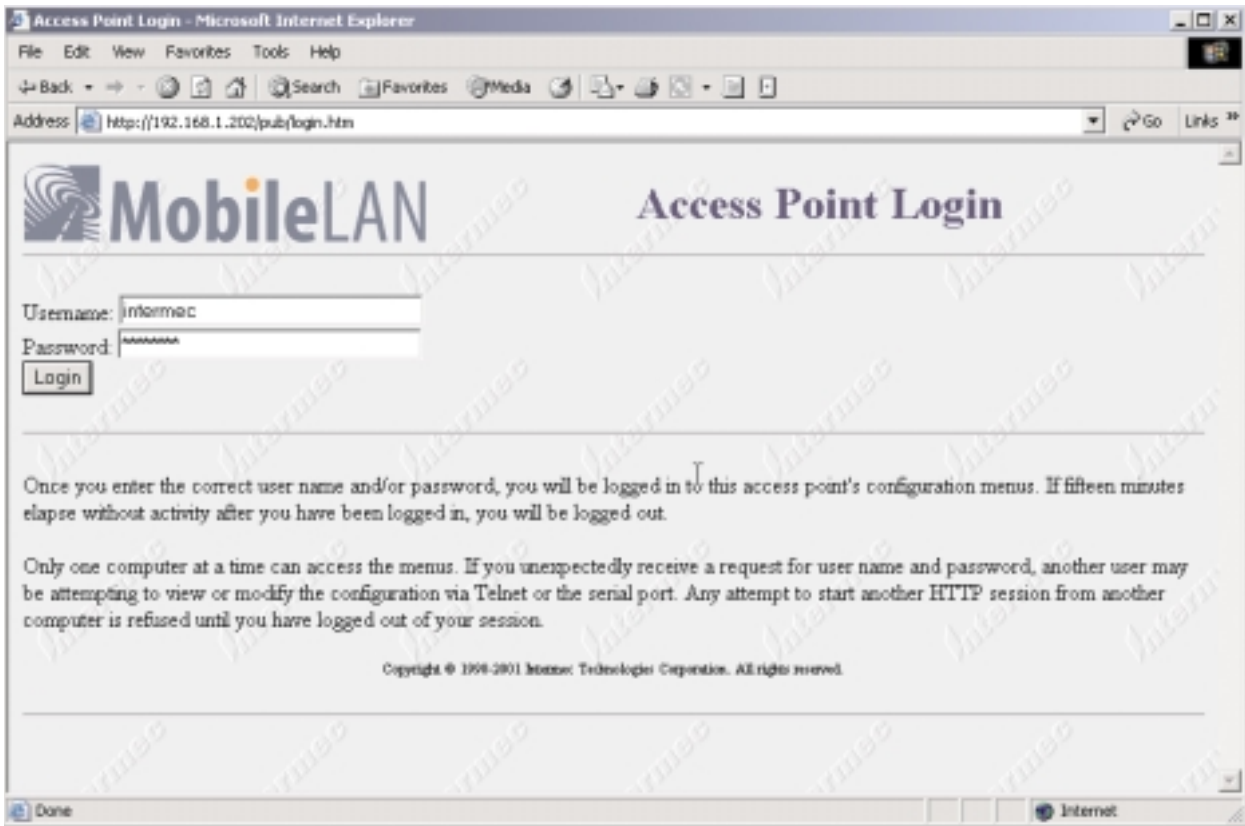


Click on “Save Changes and Reboot.”

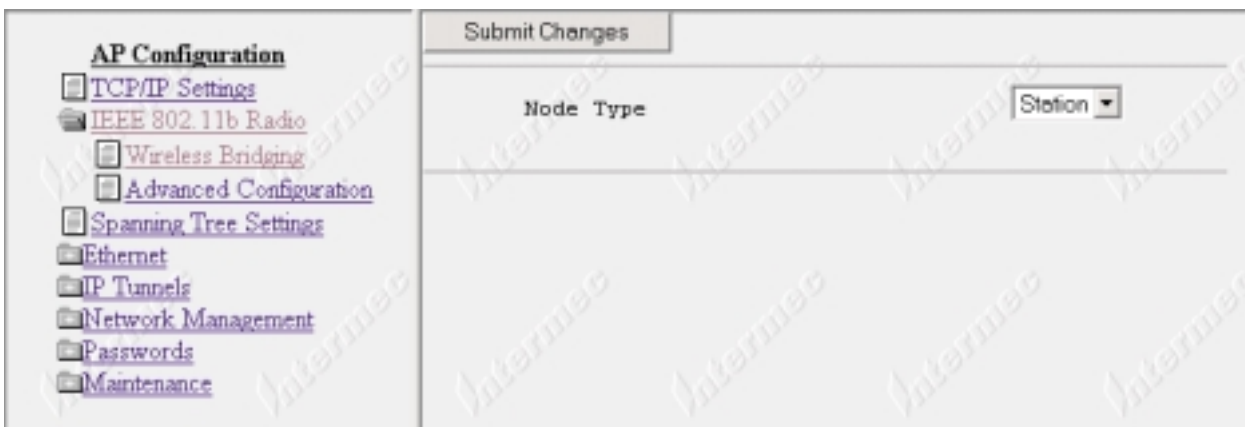
Note that this document only describes the steps necessary to set up a wireless access point to connect with a printer. Other parameters may need to be set in the access point to conform to the network. Refer to the MobileLAN access 21XX System Manual (P/N 067150) for further information.

Slave

Use a Web browser to set up the slave, that is, the MobileLAN™ access 2102 connected to your printer.



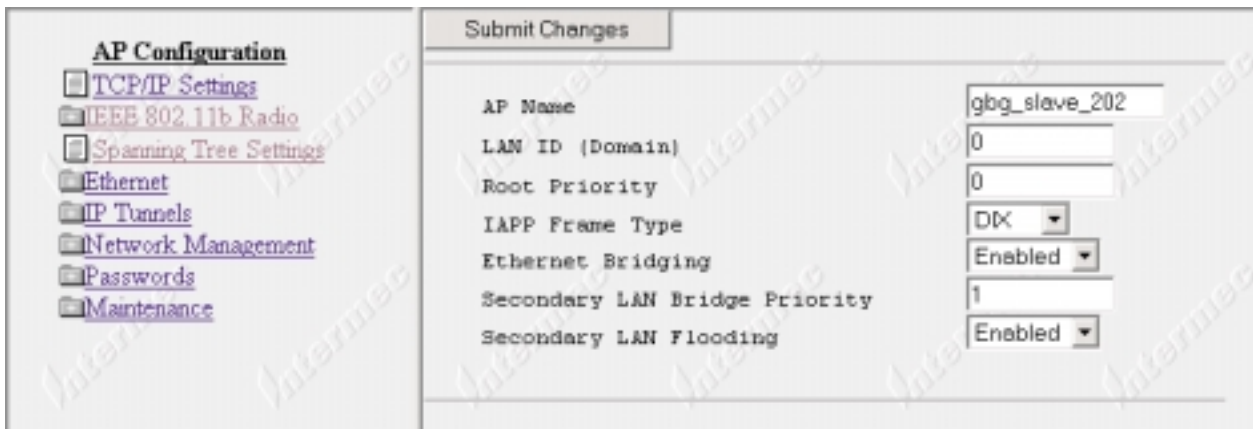
Log in as “**intermec**”. Default password is “**intermec.**”



Set the “Node type” to <Station>. Note that after changing this parameter, the MobileLAN™ access 2102 will not be able to relay radio communications to other slaves.

Slave, cont.

Go to the “Spanning Tree Settings” and set the “Secondary LAN Bridge Priority” to 1, “Root priority” to 0, and “Secondary LAN Flooding” to Enabled.



Also refer to the MobileLAN access 21XX System Manual (P/N 067150) for further information.

Setup Summary

Master

Wireless Hops	Enabled
Root Priority	0
Multicast Flood Mode	Universal

Slave

Node type	Station
Root Priority	0
Secondary LAN Bridge Priority	1
Secondary LAN Flooding	Enabled



Intermec Printer AB

Idrottsvägen 10, P.O. Box 123
S-431 22 Mölndal, Sweden

tel +46 31 869500

fax +46 31 869595

www.intermec.com

MobileLAN™ access 2102 Mounting Kit for EasyCoder Printers, Installation Instructions



1-960547-02