

SOFTWARE RELEASE NOTES

for

Intermec Terminal Emulator

Version 1.20

1. VERSION INFORMATION	2
2. INSTALLATION NOTES.....	3
To INSTALL ITE.....	3
LICENSING.....	4
3. NEW FUNCTIONALITY AVAILABLE IN VERSION 1.20.....	5
SINGLE BINARY.....	5
SECURITY	5
COLOR FOR 3270 EMULATION	5
MULTIPLE UDP+ SESSIONS.....	5
READING AND DISPLAYING DOUBLE BYTE BARCODES	5
COPY/PASTE SUPPORT.....	5
MENU OPTION TO RETAIN LICENSE.....	6
ENHANCED PRINTER EXAMPLES	6
4. ISSUES FIXED IN THIS VERSION.....	7
DISPLAY	7
EXTENDED COMMANDS.....	7
SIP AND KEYBOARDS	7
RFID	7
INSTALLATION.....	7
CONFIGURATION	7
HOST CONNECTION	8
5. KNOWN ISSUES	9
SSH.....	9
DISPLAY	9
SIP AND KEYBOARDS	9
SCANNING	9
SNAP SHOT	9
RPC.....	10
INSTALLATION.....	10

1. Version Information

This release of Intermec Terminal Emulator (ITE) operates on CK3, CK32, CK60, CV30, CN3 and CN4 Windows mobile computers. Intermec Terminal Emulator is the next generation of Intermec’s popular terminal emulation client (previously known as TE 2000) which connects Intermec computers to host applications using 5250, 3270 and VT/ANSI emulation. ITE V1.20 is built on years of industry experience and expertise in TE 2000 and has been tested for optimal performance on the Intermec terminals in emulation environments such as warehouses. ITE supports 4 simultaneous host sessions, security, and complete data collection with Intermec scanning and RFID technologies. .

Please reference the ITE Programmer’s reference manual for additional information on features and use of ITE.

Below is the minimum version of OS, SSPB and IVA that should be used with this version of ITE. The ITE application was also tested against the SmartSystem foundation version 3.50.04.1120.

Device	Operating System	Operating System Version	SSPB	IVA
CK3	Windows Mobile 6.1	3.45.26.0031	6.20.33.0472	5.04.70.2820
CK61	Windows Mobile 5.0	3.31.16.0043	5.50.21.0390	5.03.59.2386
CV30	Windows Mobile 5.0	3.30.14.0034	5.50.32.0393	5.03.59.2340
CK32	Windows Mobile 5.0	3.31.30.0010	5.50.34.0384	5.03.59.2350
CN3	Windows Mobile 5.0	3.25.15.0141	5.50.23.0362	5.03.59.2363
CN3	Windows Mobile 6.1	4.30.31.0014	7.00.36.0548	5.06.72.3191
CN4	Windows Mobile 6.1	4.41.32.0018	7.00.36.0555	5.06.72.3198

Note: If you are using ITE with the SPS the ITE V1.20 will require you to use the SPS V1.20.00.0506 or greater.

2. Installation Notes

To Install ITE

You may install ITE onto your Intermec terminal listed above using one of the following methods:

SmartSystems Foundation – This method is a good option when installing ITE on multiple computers. This option requires a PC running SmartSystems Foundation. You may download a free version of SmartSystems Foundation from Intermec’s web site at:

- <http://www.intermec.com/products/smrtsysfoundation/index.aspx>

Download ITE from the Intermec downloads site to your PC after you have installed SmartSystems Foundation. ITE will appear in the SmartSystems Console. You may then use any of the supported installation methods including dragging the ITE client and dropping it onto the target computer.

For the following methods please download the ITE application from the Intermec downloads web site <http://www.intermec.com/products/ite/index.aspx>. You will have a SmartSystem bundle which you then need to extract onto your PC. After running the self extracting archive you will have the following folder created on your PC

C:\Program Files\Intermec\SmartSystem\ss_lib\software\ITE_WM_ARMV4I_1.20.03.640

From this folder you need to copy the *.cab.

- SD Card Copy the ITE_WM_ARMV4I.cab files on to the SD Card. Install the SD Card into the Intermec terminal and then run the cab file.
- ActiveSync Copy the ITE_WM_ARMV4I.cab files to the root directory of the Intermec terminal. Then run the cab file.
- Avalanche create an ava package which contains the ITE_WM_ARMV4I.cab file and then deploy this package to the Intermec terminal.

Licensing

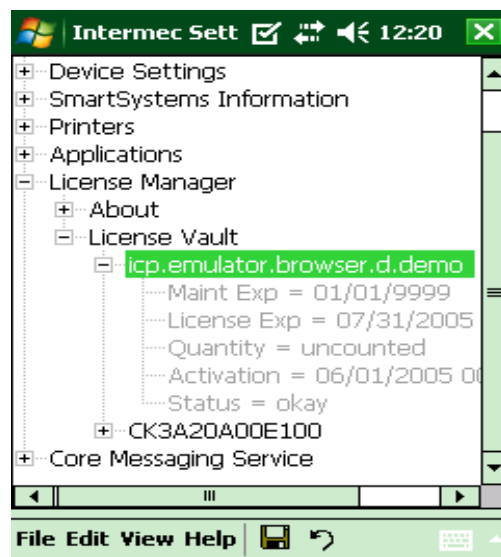
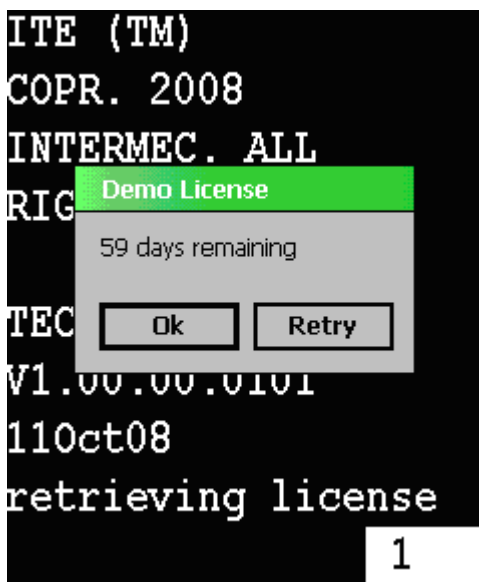
If ITE was not purchased pre-installed on your Intermec terminal, ITE will require activation to operate with full functionality beyond the evaluation period.

- If your computer was purchased with ITE preinstalled, then no activation is required.

The ITE V1.20.03.0640 application was built on Jun 11, 2010.

ITE will run in a Demo mode for 60 days if your device does not contain a proper factory license or activation license. Demo mode allows you to operate the device for 60 days in “full feature”. After 60 days, the device will move to nag mode.

Licenses are available for purchase through your Intermec representative.



3. New Functionality Available in Version 1.20

Single Binary

- The ITE application is now delivered as a SmartSystem bundle or cabfile which can be run on any of the following Intermec Windows mobile computers (CK3, CK32, CV30, CK60, CN3 or CN4). There is a separate SmartSystem bundle or cabfile which operates on the following Intermec Windows CE computers (CK60 and CV30).

Security

- The SSH port is no longer hard code to only use port 22. The user can now select whatever port they want to use as an SSH port. The well known port 22 will be the default.
- Added support for SSL. We support SSL Encryption only, Server Authentication only, Client Authentication only or Both Server and Client Authentication. Certificates can be either in DER (Distinguished encoding rule) which is sometimes referred to as ASN1 (Abstract Syntax Notation) or PEM (Private-enhanced mail) formats with each certificate in its own file. We have implemented SSL according to the following RFCs.

PKCS 1 V2.1 as defined by RFC3447 for RSA data exchanges

PKCS 2 V1.4 as defined by RFC2631 for Diffie-Hellman Key Agreement standard

PKCS 8 V1.2 as defined by RFC5208 Private key Information Syntax Standard

Color for 3270 emulation

- The ITE has a new menu option to emulate an IBM-3279-3 color monitor. When enabled the ITE application will support the Set Attribute or the Start of field extended order to change the color of the text to be displayed.

Multiple UDP+ Sessions

- Added support for multiple sessions of the UDP+ transport protocol. You can now configure from one to four UDP+ sessions. Requires SPS V1.20 or above.

Reading and displaying Double Byte barcodes

- When the Do UTF8 option is enabled and barcodes are read which contain UTF8 characters they are now displayed as a UTF8 character according to the double byte OS installed on the computer

Copy/Paste Support

- The ITE application now supports the standard windows copy/paste function. There is a menu option to enable this feature.

Menu Option to retain license

- A menu option was added which when enabled will allow the ITE application to retain its non factory installed license rather than checking it back into the SmartSystems server.

Enhanced Printer examples

- The ITE programmer's reference manual was updated with additional examples of printing using IPL (Intermec Programming Language) and ESC/P.

4. Issues Fixed in this Version

Display

- When entering the RFID remote reader address and pressing the delete key the address will now be set to a NULL string.
- Added menu options for setting UDP+ configuration values.
- After configuring the menu settings or toolbar options the SIP is no longer automatically displayed. Instead the SIP is restored to its setting before these menus were entered.
- The Lucida Console font is the default font for all of our computers.
- On a CV30 WinCE the select font window is now correctly sized for the computer screen.
- The ITE toolbar is now limited to two rows at the most.
- If you added the VOIP button to the ITE toolbar and then removed it this button was still active. Now it is completely removed.

Extended Commands

- The extended commands #F and #G will now receive data if you have the Bluetooth print device selected.
- The #W extended command to write RFID tags to a reader which is connected to the ITE application remotely now is supported.

SIP and Keyboards

- Corrected an issue where hitting the rolldown key on a double byte OS would cause the double SIP to come up rather than sending a rolldown key to the host.
- Corrected an issue where if the device was put into a locked state when running ITE in a non locked down mode the OS SIP control button would appear in the middle of the ITE toolbar and be active.

RFID

- RFID setup removed from CN4 terminals since this terminal does not support an RFID interface.

Installation

- The restore defaults for the ITE application are now the same as the installed defaults.

Configuration

- The print device configuration did not present a pull down list for the various settings when connected to the SmartSystem server for a CK60 terminal.
- Using the remap.cfg file to send data to the host with a value of less than 0x20 with VT/ANSI block mode would cause the data to not be transmitted immediately and instead required a second key stroke to send all of the data.

Host Connection

- If the computer failed to obtain a DHCP address prior to starting the ITE application you use to be required to hit a key before the ITE application would connect to the host.
- If the ITE application got a socket error during the telnet negotiations then the data stream was not being reset and instead the telnet negotiations were being sent to the data stream. When in VT/ANSI mode this would cause `ÿ(` to be displayed on the screen. If you are using 5250 data stream this would cause a C00 error to be displayed.
- Occasionally a UDP+ broadcast message was sent from a terminal which would then be received by all other terminals. When this happened all terminals would reset there UDP+ connection.
- The out of range monitor was not correctly being displayed when we lost connection to the access point. Instead the out of range monitor was only being displayed if the RSSI fell below `0xfffffb5`.
- If the out of range monitor message was displayed then it would only be visible for approximately five seconds before it would be removed and then any data that the ITE application attempted to send would be sent regardless if we were connected to access point or not.
- On some terminals a .8 second delay was introduced in the ITE V1.1x versions. The function call to unlock the scanner after each transaction is no longer made and instead is only called now if the out of range dialog box was presented to the user and is now being removed.
- With an autologin script that had a `promptsessionstart` setting there where occasions where you were required to press enter multiple times before making a valid connection.

5. Known Issues

SSH

- Sending a stream of data greater than 6K to the device in an SSH session while changing sessions or entering the ITE menus may cause the application to lockup (or have unexpected behavior).

Display

- When you go into the ITE menus and chose to change the display configuration from lock down to no lock down then the ITE toolbar is no longer displayed until you exit out of the ITE menus.
- Occasionally when starting the ITE application it has been seen where the SIP was not being shown and toggling the SIP with the S button would resize the screen, but failed to display the SIP. If this happens the work around is to exit the ITE application and restart it.

SIP and Keyboards

- On CK3, CV30, CK32 and CK61 terminals hitting the control 1-5 keys does not send data to the host. The work around is to use the SIP to send these control values to the host.
- On a CV30 terminal using the iKey keyboards the view port keys work like paging keys.
- On a CV30 terminal using the iKey keyboards the paging keys do not work at all.
- On a Cv30 terminal using the iKey keyboards the field exit key does not work.

Scanning

- The encode barcodes for Next screen, control X and Control 5 no longer work.
- When parmsbysession is enabled and you scan a computer identics 2 of 5 barcode then an = character is added to the beginning of the barcode as the barcode type character. The actual value is suppose to be a Z character and the = is suppose to be for a straight 2 of 5 barcode.
- When parmsbysession enabled EAN13 barcodes will not decode.
- The scanner fails to read data in windows dialog boxes.

Snap Shot

- If ITE is running in non lockdown mode and you start the snapshot application then functions like volume up and volume down are not useable. Once you close the snapshot application these features are once again usable.
- If you enter an image text which is greater than 20 characters then the string overwrites itself instead of wrapping the text or bringing up a new line.
- When running the snapshot application and you attempt to select the file you want to ftp up you will notice that the entire file name is not being displayed. Since the file names all start with the serial number of the device it is hard to distinguish which one is which.

- On a Japanese OS the default folder my documents\my pictures is not empty. If you then select to ftp all files these default images will be sent to your ftp site.
- On a CN4 terminal if you open up the snapshot parameters configuration tree then all of the entries will be duplicated except for the first and last entries.
- When the snapshot application is launched on a CN4 terminal with an EA11 intermittently it will generate an error.
- When the snapshot application is launched on a CN4 terminal with an EA21 the image stream is duplicated on the screen.
- The Snapshot application does not run on a CN3 terminal with a double byte OS.

RPC

- Windows dialog boxes are not sent from the ITE application to the attached client.
- If an attached client severs its ties to the ITE application rather than closing its connection, then performance of the ITE application will be vastly affected (approximately five second delays for all ensuing screen updates).
- If you use SendKeys function then all data will be sent to the ITE application as uppercase characters. There is no method to send lowercase characters.

Installation

- If you are upgrading from the TE2000 version 8.28 or earlier and you attempt to upgrade to the ITE application while the TE2000 is currently running on the device the installation will appear to work correctly, but after the terminal is warm booted the ITE application will fail to launch and instead report that it has a bad or missing component. The work around for this is to exit the TE2000 application before you attempt to upgrade it to the newer ITE application.